

# ANNUAL REPORT

2007





## THE BOARD

Karin Morgan **CHAIR**  
Roger Haston **VICE CHAIR**  
John Graham **SECRETARY**

Ken Bixel, VMD, MS  
Trent Hein  
Curtis Johns

Bruce Joss  
Carol Lathrop  
Marilyn Reynolds

Jennifer Thompson  
Margaret Van Cleave  
Steven Woods

# DEAR FRIENDS,

The year 2007 has been an exciting one for the Humane Society of Boulder Valley. We welcomed our new CEO, Lisa Pedersen. Lisa, with the assistance of the incredible staff of the organization and your support, has lead the Humane Society's continued focus on creating healthy relationships between people and pets in our community. With this strong new leadership of the organization in place, the Humane Society has continued to meet and exceed its goals for the year thanks to the efforts of our donors, clients and volunteers.

The friends of the Humane Society in our community have come together this past year as never before to help us expand our services to the people and pets of Boulder Valley. Volunteers have spent over 64,000 hours this year to help us care for the 8,853 animals that have been brought through our doors. The Humane Society set a new record of 5,370 adoptions and was able to save the lives of over 2,600 animals transferred in from other shelters, often overcrowded and understaffed. Despite the ten percent increase in the number of animals we saw at the shelter, 87 percent of these animals were reunited with their guardians or adopted into loving homes, undoubtedly one of the highest live release rates in the nation!

The new Training and Rehabilitation Center which opened in March has greatly enhanced our ability to place animals with behavior issues in new homes. The resources you have provided to the Humane Society have given hope to countless animals through our behavior modification program and rehabilitation of individual animals. In addition, over 2900 clients have benefited from the many training courses that are now available in the Sonny Center building.

The addition of a new shelter veterinary technician to the clinic staff has facilitated an enhanced level of care for our shelter animals. Because of you, we were also able to provide subsidized care to over 400 clients in need of veterinary care for their pets, a 10% increase over last year.

The Humane Society continues to expand its education programs by offering increasing numbers of summer youth camps, day camps during non-school days in Boulder Valley and other youth opportunities. These programs have helped over 180 children better understand the importance of the bond between animals and people.

With your help, the Humane Society will continue to strengthen this bond. Thank you for everything you do.

Sincerely,  
Karin Wyman Morgan, HSBV Board Chair







# A CLOSER LOOK

## AT OUR NEW LEADERSHIP

In May, the Board of Directors appointed Lisa Pedersen to be the new Chief Executive Officer of the Humane Society of Boulder Valley. She replaced longtime CEO Jan McHugh-Smith, who left to become the president of another of our country's leading animal care organizations, the San Francisco SPCA. Our board of directors unanimously agreed that Lisa's technical and professional skills along with her strong understanding of our organization, community, and supporters, made her uniquely qualified for this position.



Lisa has over 14 years of non-profit management experience with an extensive background in fundraising and animal welfare. She joined the Humane Society of Boulder Valley in 1998 and managed the \$5.8 million capital campaign for our current facility which opened in 2001. Lisa successfully increased donation support for the organization each year and expanded community awareness of the agency through public relations efforts.

She is a member of the Society of Animal Welfare Administrators and is a Certified Animal Welfare Administrator. She is a member of the board of directors for the Colorado Federation of Animal Welfare Agencies and is President of the board of directors for Community Shares of Colorado.



The friends of the Humane Society in our community have come together this past year as never before to help us expand our services to the people and pets of Boulder Valley. Volunteers spent over 64,000 hours in 2007 to help us care for the 8,385 animals that came through our doors. **The Humane Society of Boulder Valley set a new record of 5,370 adoptions and was able to save the lives of over 2,600 animals transferred in from other shelters,** that are often overcrowded and understaffed. Despite a ten percent increase in the number of animals we saw at the shelter, 87 percent of these animals were reunited with their guardians or adopted into loving homes; that's one of the highest live release rates in the nation!

# SAVING MORE

## **PET ADOPTION**

Our progressive adoption program places thousands of lost, abandoned and unwanted companion animals with loving guardians. Anyone interested in adopting can visit the shelter or our website, [www.boulderhumane.org](http://www.boulderhumane.org) to see photos and descriptions which are updated hourly. At the Humane Society of Boulder Valley we are committed to finding homes for as many animals as possible, with 5,370 animals adopted in 2007.

## **TRANSFER PROGRAM**

Animal shelters from Colorado, neighboring states and Mexico rely on us to accept animals from their overcrowded facilities. Our staff and volunteers dedicate time and resources to help these animals find homes. Without our transfer program, many of these animals would have faced an uncertain future. Last year, 64 organizations transferred 2,613 animals to the Humane Society of Boulder Valley.



## **SHELTER MEDICINE / MEDICAL REHABILITATION**

Through our medical rehabilitation program we can ensure each animal gets the individualized attention they need to regain their health. Over 40% of the animals we shelter need some level of medical treatment while in our care. The rehabilitation program aims to stabilize and treat every wounded and sick animal that comes through our doors until their guardians can be located or the animal can be placed in our adoption center.

# LIVES

## **BEHAVIOR MODIFICATION PROGRAM**

We launched our Behavior Modification Program in April 2007 to alter shelter animals' behavior to successfully re-home pets, help adopted animals stay in their new homes, help pet guardians in our community resolve pet behavior issues, and serve as a model program to help other animal welfare agencies implement behavior programs. The resources you have provided to the Humane Society have given hope to countless animals through our behavior modification program and rehabilitation of individual animals.

## **FOSTER CARE PROGRAM**

Foster families make it possible to help more animals by providing the individualized care animals need to become healthy. Animals with special needs thrive in our foster homes. Thanks to the dedicated efforts of our foster volunteers, 740 animals were cared for in temporary homes until they were placed in the adoption center.

## **VETERINARY CARE PROGRAM**

With your support, we were able to provide subsidized care to 421 animals in 2007, 20% more than the previous year. Additionally, we provided 63 subsidized surgeries. Through our Veterinary CARE program, we can assure that companion animals receive the medical care they need and can remain in the home with their guardian by providing subsidized medical care and spay/neuter surgeries to clients who qualify as low income.

## **CRUELTY INVESTIGATION**

In 2007, Animal Care and Control investigated 474 welfare cases and cared for animals involved in neglect and cruelty cases. The Humane Society of Boulder Valley works closely with local law enforcement, social services, and child protection agencies to promote compassion and improve the quality of life in our community. Whatever the concern, seven days a week, the Humane Society provides animal rescue in Boulder.

## **REUNITING FAMILIES**

We scan every animal in our care for a microchip to facilitate animals being reunited with their families. We love to remind our community that you can keep your pet safe with a collar and identification tag, and a microchip. Microchipping is available through our Veterinary Clinic and at the time of adoption.

## **SAFE HAVEN PROGRAM**

Working together with Safehouse Progressive Alliance for Nonviolence and the Emergency Family Assistance Association, the Safe Haven Program provides short-term care and boarding for pets whose guardians are in crisis situations. Animals are provided with medical care and safe housing for a maximum of six weeks. In 2007, the Humane Society provided care to 12 of these animals, representing over 244 boarding days.







## **ANIMEALS**

Community Food Share clients receive pet food from the Humane Society for their companion animals. Food is collected by the Humane Society and distributed by Community Food Share to several programs for people in need.

## **ANIMAL ASSISTED ACTIVITIES AND PET VISITATION**

Our trained volunteers visit senior and juvenile facilities throughout Boulder County to cheer the hearts of residents and promote well-being. Visits are provided year round and free of charge.

# ANIMAL LOVERS OF THE FUTURE

Toward our goal of encouraging children to become champions of animals in need and helping the next generation learn to be stewards of our furry friends, we established Camp Muddy Paws in the summer of 2007.



This day camp offers a truly unique experience by giving campers a chance to make a difference in the lives of the homeless animals. The camp was wildly successful with spots selling out in a matter of hours. In all, 120 children participated in Camp Muddy Paws in 2007, enjoying activities and learning about responsible pet guardianship and other humane topics.

Hosting birthday parties, scout troops and other school groups, the Humane Society of Boulder Valley offers a variety of educational opportunities for area students during the school year and also during days off from school.





# TRAINING & BEHAVIOR PROGRAM

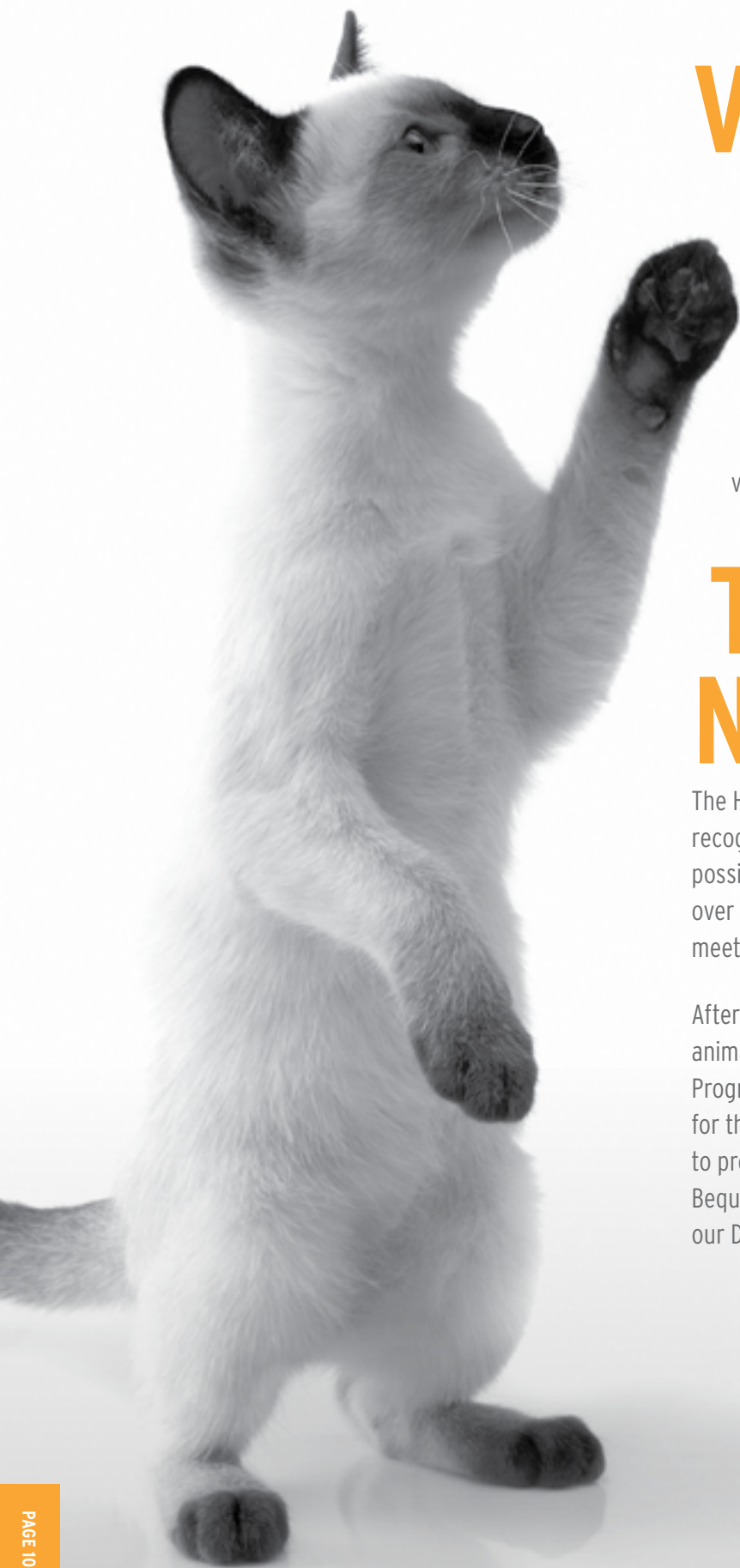
## **NEW TRAINING AND BEHAVIOR CENTER**

Our wonderful center opened in March 2007. During the year, over 2,900 clients benefited from the many training courses that are now available in the Sonny Center building. Our training methods focus exclusively on positive reinforcement, helping to strengthen the relationship between guardian and dog.

Visit [boulderhumane.org/training](http://boulderhumane.org/training) for class information and upcoming courses. Registration is available 24 hours a day.

The Humane Society of Boulder Valley, in partnership with the City of Boulder, evaluates and provides intervention programs for dogs in the community who received an aggressive animal summons. The goal of the program is to offer professional unbiased information about the dog and guardian. This information guides the court in implementing sentencing that helps the guardian to better manage problem behavior.

Dogs who have difficulty with other dogs can attend our Grumpy Growler classes. The goal of the classes is to teach dogs and clients to have a more harmonious relationship with the community. Skills are taught for the management and prevention of problem behavior. In 2007, over 122 clients and their dogs received services from the Court Program and the Grumpy Growler classes. Whether it's addressing bad habits or learning some great new tricks, training is the way to help you and your dog understand each other better.



# VOLUNTEER PROGRAM

In 2007, 580 volunteers contributed more than 64,121 hours to caring for the animals, raising funds, assisting with outreach, and working in our retail centers. Our volunteers make a difference in the lives of homeless animals every day. For information on volunteering, visit our website, [www.boulderhumane.org](http://www.boulderhumane.org).

# THE HELPING NEVER ENDS

The Humane Society of Boulder Valley Bequest Society recognizes those individuals who make a legacy of care possible for the animals we serve. The bequests of donors over the decades help us build a strong institution that meets the ever changing needs of the animals.

After a guardian's death the future of their companion animals can be uncertain. The Companion Care for Life Program assists in making the best possible arrangements for the care of your animals when you are no longer able to provide for their needs. For more information on the Bequest Society or Companion Care for Life Program call our Development Department at 303-442-4030, ext. 669.





# NEW WEBSITE LAUNCHES

In July of 2007, we were proud to launch our newly-redesigned website. In addition to being easy on the eyes, the new [boulderhumane.org](http://boulderhumane.org) is much easier to navigate and puts our animals in a better light.

The website is the fastest way to donate, find program descriptions, information on upcoming events, volunteer opportunities, pet care tips, sign up for classes, and much more. You'll find photos and descriptions of the animals available for adoption and the web site is updated constantly!

# THRIFT AND GIFT SHOP

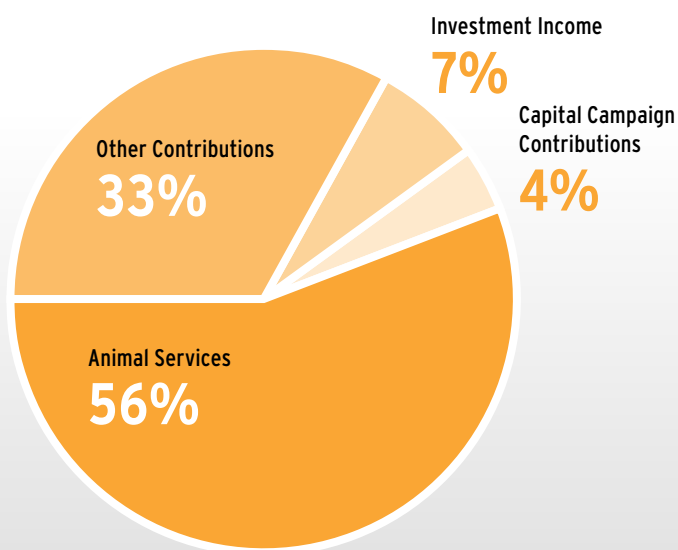
Thanks to your generous donations of household items, clothing and furniture, the Thrift and Gift Shop raised \$417,688 in 2007 to help support our programs at the Humane Society. In 2008 we completed a remodel for the shop to make it even more attractive to shoppers. The Thrift and Gift Shop is a great place to shop, donate, and volunteer. Call 303-415-0685 for more information on how you can help.



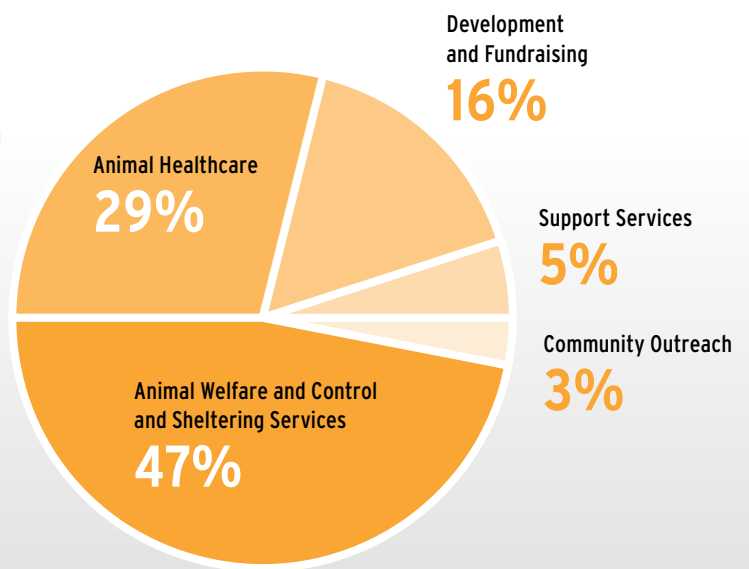
# FINANCIALS

	2007
<b>SOURCES OF SUPPORT</b>	
Shelter and Animal Health Care	\$2,866,052
Capital Campaign Contributions	\$204,466
Other Contributions	\$1,665,177
In-Kind Contributions	\$4,900
Investment Income	\$361,913
<b>Total Revenue</b>	<b>\$5,102,508</b>
<b>EXPENSES</b>	
Animal Welfare and Control: Sheltering Services	\$2,256,238
Animal Health Care	\$1,396,551
Community Outreach	\$130,484
Support Services	\$241,424
Development and Fundraising	\$741,794
<b>Total Expenses</b>	<b>\$4,766,491</b>
<b>Excess of Revenue over Expenses</b>	<b>\$336,017</b>

2007 SOURCES OF SUPPORT



2007 EXPENSES



# METRO DENVER MEANINGFUL MEASUREMENTS

In August 2004, a group of animal welfare industry leaders from across the nation met at the Asilomar Convention Center in Pacific Grove, California. Their purpose was to build bridges across varying philosophies among those involved in animal welfare, to develop relationships, and to create goals focused on significantly reducing the euthanasia of healthy and treatable companion animals in the United States.

A common vision for the future was adopted—the Asilomar Accords. The Accords set forth guiding principles for animal welfare organizations to work together to save the lives of all healthy and treatable companion animals. The Asilomar document aims to cut through the rhetoric of ‘no kill’ vs. ‘open admission’ shelters and to dispel the murkiness of what defines adoptable animals. To achieve this, there is a national effort for all organizations that shelter animals to utilize the same statistical record keeping.

Now that there’s a standard language that all shelters can use, we can more easily compile statistics to help us compare the work that we do at the Humane Society of Boulder Valley with other shelters both locally and nationally.

On the local level, the Humane Society of Boulder Valley is a member of the Metro Denver Shelter Alliance. The Metro Denver Shelter Alliance was formed in 2000 by public and private animal service providers in order to better assist pets and people and to reach a common goal—reducing euthanasia by increasing the number of animals adopted and reunited at shelters throughout the community. The Metro Denver Shelter Alliance fosters collaborative efforts of local animal welfare groups to increase the save rate of companion animals in our community and promote responsible pet guardianship.



# MEANINGFUL MEASUREMENTS

JANUARY 1, 2007 – DECEMBER 31, 2007



		2006			2007		
		DOGS	CATS	TOTAL	DOGS	CATS	TOTAL
<b>A</b>	<b>BEGINNING SHELTER COUNT</b>	<b>61</b>	<b>86</b>	<b>147</b>	<b>70</b>	<b>69</b>	<b>139</b>
<b>INTAKE</b>							
	<i>INTAKE (LIVE CATS AND DOGS ONLY) From the Public</i>						
	Healthy	1,421	842	2,263	1,617	96	2,586
	Treatable - Rehabilitatable	69	458	527	136	689	825
	Treatable - Manageable	272	343	615	211	345	556
	Unhealthy & Untreatable	727	382	1,109	692	565	1,257
<b>B</b>	<b>SUBTOTAL INTAKE FROM THE PUBLIC</b>	<b>2,489</b>	<b>2,025</b>	<b>4,514</b>	<b>2,656</b>	<b>2,568</b>	<b>5,224</b>
	<i>Incoming Transfers from Organizations within Community/Coalition</i>						
	Healthy	53	10	63	57	27	84
	Treatable - Rehabilitatable	6	7	13	6	46	52
	Treatable - Manageable	27	0	27	4	3	7
	Unhealthy & Untreatable	11	1	12	13	3	16
<b>C</b>	<b>SUBTOTAL INTAKE FROM INCOMING TRANSFERS FROM ORGANIZATIONS WITHIN COMMUNITY/COALITION</b>	<b>97</b>	<b>18</b>	<b>115</b>	<b>80</b>	<b>79</b>	<b>159</b>
	<i>Incoming Transfers from Organizations outside Community/Coalition</i>						
	Healthy	1,266	129	1,395	1,709	110	1,819
	Treatable - Rehabilitatable	199	82	281	229	29	258
	Treatable - Manageable	165	7	172	129	3	132
	Unhealthy & Untreatable	262	5	267	155	6	161
<b>D</b>	<b>SUBTOTAL INTAKE FROM INCOMING TRANSFERS FROM ORGANIZATIONS OUTSIDE COMMUNITY/COALITION</b>	<b>1,892</b>	<b>223</b>	<b>2,115</b>	<b>2,222</b>	<b>148</b>	<b>2,370</b>
	<i>For owners/guardians requesting euthanasia</i>						
	Healthy	0	0	0	0	0	0
	Treatable - Rehabilitatable	0	0	0	0	0	0
	Treatable - Manageable	0	0	0	0	0	0
	Unhealthy & Untreatable	221	136	357	104	71	175
<b>E</b>	<b>SUBTOTAL INTAKE FROM OWNERS/GUARDIANS REQUESTING EUTHANASIA</b>	<b>221</b>	<b>136</b>	<b>357</b>	<b>104</b>	<b>71</b>	<b>175</b>
<b>F</b>	<b>TOTAL INTAKE (B+C+D+E)</b>	<b>4,699</b>	<b>2,402</b>	<b>7,101</b>	<b>5,062</b>	<b>2,866</b>	<b>7,928</b>
<b>G</b>	<b>Owner/Guardian Requested Euthanasia (Unhealthy &amp; Untreatable Only)</b>	<b>221</b>	<b>136</b>	<b>357</b>	<b>104</b>	<b>71</b>	<b>175</b>
<b>H</b>	<b>ADJUSTED TOTAL INTAKE (F minus G)</b>	<b>4,478</b>	<b>2,266</b>	<b>6,744</b>	<b>4,958</b>	<b>2,795</b>	<b>7,753</b>

		2006			2007		
		DOGS	CATS	TOTAL	DOGS	CATS	TOTAL
<b>ADOPTIONS</b> <i>(only dogs and cats adopted by the public)</i>							
	Healthy	1,679	794	2,473	2,279	931	3,210
	Treatable - Rehabilitatable	245	512	757	358	696	1,054
	Treatable - Manageable	386	226	612	305	245	550
	Unhealthy & Untreatable	83	24	107	158	68	226
<b>I</b>	<b>TOTAL ADOPTIONS</b>	<b>2,393</b>	<b>1,556</b>	<b>3,949</b>	<b>3,100</b>	<b>1,940</b>	<b>5,040</b>
<b>OUTGOING TRANSFERS</b> <i>to Organizations within Community/Coalition</i>							
	Healthy	11	1	12	0	0	0
	Treatable - Rehabilitatable	2	0	2	0	0	0
	Treatable - Manageable	10	4	14	1	0	1
	Unhealthy & Untreatable	108	9	117	3	0	3
<b>J</b>	<b>TOTAL OUTGOING TRANSFERS to Orgs within Community/Coalition</b>	<b>131</b>	<b>14</b>	<b>145</b>	<b>4</b>	<b>0</b>	<b>4</b>
<b>OUTGOING TRANSFERS</b> <i>to Organizations outside Community/Coalition</i>							
	Healthy	0	0	0	7	0	7
	Treatable - Rehabilitatable	0	0	0	7	0	7
	Treatable - Manageable	0	0	0	9	4	13
	Unhealthy & Untreatable	0	0	0	96	4	100
<b>K</b>	<b>TOTAL OUTGOING TRANSFERS to Orgs outside Community/Coalition</b>	<b>0</b>	<b>0</b>	<b>0</b>	<b>119</b>	<b>8</b>	<b>127</b>
<b>RETURN TO OWNER/GUARDIAN</b>							
<b>L</b>	<b>TOTAL RETURN TO OWNER/GUARDIAN</b>	<b>1,262</b>	<b>271</b>	<b>1,533</b>	<b>1,237</b>	<b>288</b>	<b>1,525</b>
<b>DOGS &amp; CATS EUTHANIZED</b>							
<b>M</b>	Healthy (Includes Owner/Guardian Requested Euthanasia)	0	0	0	0	0	0
<b>N</b>	Treatable - Rehabilitatable (Includes Owner/Guardian Requested Euthanasia)	11	19	30	14	40	54
<b>O</b>	Treatable - Manageable (Includes Owner/Guardian Requested Euthanasia)	48	99	147	14	76	90
<b>P</b>	Unhealthy & Untreatable (Includes Owner/Guardian Requested Euthanasia)	854	446	1,300	559	485	1,044
<b>Q</b>	<b>Total Euthanasia (M+N+O+P)</b>	<b>913</b>	<b>564</b>	<b>1,477</b>	<b>587</b>	<b>601</b>	<b>1,188</b>
<b>R</b>	Owner/Guardian Requested Euthanasia (Unhealthy & Untreatable Only)	221	136	357	104	71	175
<b>S</b>	<b>ADJUSTED TOTAL EUTHANASIA (Q minus R)</b>	<b>692</b>	<b>428</b>	<b>1,120</b>	<b>483</b>	<b>530</b>	<b>1,013</b>
<b>T</b>	<b>SUBTOTAL OUTCOMES (I+J+K+L+S) Excludes Owner/Guardian Requested Euthanasia (Unhealthy &amp; Untreatable Only)</b>	<b>4,478</b>	<b>2,269</b>	<b>6,747</b>	<b>4,943</b>	<b>2,766</b>	<b>7,709</b>
<b>U</b>	<b>DIED OR LOST IN SHELTER/CARE</b>	<b>3</b>	<b>21</b>	<b>24</b>	<b>16</b>	<b>46</b>	<b>62</b>
<b>V</b>	<b>TOTAL OUTCOMES (T + U) Excludes Owner/Guardian Requested Euthanasia (Unhealthy &amp; Untreatable Only)</b>	<b>4,481</b>	<b>2,290</b>	<b>6,771</b>	<b>4,959</b>	<b>2,812</b>	<b>7,771</b>
<b>W</b>	<b>ENDING SHELTER COUNT - December 31</b>	<b>70</b>	<b>69</b>	<b>139</b>	<b>64</b>	<b>76</b>	<b>140</b>
<b>X</b>	<b>LIVE RELEASE RATE</b>	<b>83%</b>			<b>87%</b>		

# ANNUAL CONTRIBUTIONS

## 2007 CORPORATE SPONSORS

### CASH AND IN-KIND \$10,000 +

Centerplate  
Coors Event Center  
The Daily Camera  
Hill's Pet Nutrition - Science Diet  
Hurdle's Jewelry  
HW Home  
Nuf Said Advertising  
Pettyjohn's Liquor and Wine  
Superior Liquor Market

### CASH AND IN-KIND \$5,000 +

Applied Trust Engineering  
Avery Brewing Company  
Bellock Philanthropic Fund  
Control Service Center  
Doghouse Productions  
Flatiron Crossing  
Hess Collection  
Hunter Douglas Inc.  
Rage Sportswear  
RC Special Events  
Roche Colorado Corporation

### CASH AND IN-KIND \$2,500 +

Alien Woodworks  
Cottonwood Kennels and Groomers  
FlavorTek Inc.  
Amy Glickson Photography  
In Clover  
Martin Auctioneering  
Periodontics and Dental Implants  
Dr. Gregg Rogers & Dr. John Dodge  
Photo Express  
Whole Foods

### CASH AND IN-KIND \$1,000 +

Active Cities  
J. Albrecht Fine Jewelry  
Alpine Hospital for Animals  
Applebee's

Babes Around Denver  
Banjo Billy's Bus Tours  
Barbara Bronk Interior Design  
Boulder Associates  
Boulder Food and Wine Festival  
Broadway Animal Hospital and Pet Center  
Cache  
Camp Bow Wow - Boulder  
Chocolove  
Coinstar Entertainment Services  
Colorado Pet Chef  
CompUSA  
Coors Distributing Company  
The Cork  
CU Athletic Department  
Dog City Inc.  
Doghouse Productions  
Dolan's  
Flatirons Moving  
Flatz  
Half Fast Subs  
The Hess Collection  
Horizons K-8 Alternative School  
Leaf Vegetarian Restaurant  
Liquor Mart  
McGraw-Hill Companies  
Micro Motion Inc.  
Mountain Sports Media  
Murphy's Grill  
Muttropolis  
Old Chicago  
Omni Interlocken Resort  
Pixie Mate  
PROfessional PAYment Service  
Q's Restaurant  
Qdoba Mexican Grill  
Rallysport Health & Fitness  
The Ringmaker  
The Ritz  
The Ritz-Carlton - Bachelor Gulch  
Royal Caribbean International  
Rumbi Island Grill

Scenographics  
Silicon Mountain Memory  
SmithKlein Gallery  
Sportsmart  
Twisted Pine Brewing Company  
Wells Fargo Bank West, NA  
Wells Fargo Private Client Services

### CASH AND IN-KIND \$500 +

Adventure Fit, Inc.  
Aji  
Altitude Sports and Entertainment  
Arapahoe Basin Ski Area  
Armantrout Pet Portraits  
A Spice of Life Catering  
Ball Aerospace  
Benefits and Incentives Group  
Bikers for Best Friends  
Bixby School  
Bloom  
Borders Books, Music and Café  
Flatiron Crossing  
Boulder Chophouse & Brewery  
Boulder Dog Days  
Boulder Dushanbe Teahouse  
Boulder GWS LLC  
Boulder Stove and Flooring  
Boulder Wealth Management LLC  
Bull Publishing Company  
Mark H. Carson & Associates  
Centennial Valley Animal Hospital  
Drs. Denham and Postma Optometrists  
Estey Printing  
Ferret Depot  
Google  
LA Weight Loss Centers  
Lakeshore Athletic Club  
Lake Valley Golf Club  
Living Change Inc.  
McGuckin Hardware  
McKiman Bed and Bath  
Mercedes Benz - Westminster



Pet Pick-Ups  
Photography by Bridgette  
Ridge Liquors  
Sargent Bickham Lagudis  
Shamane's Bake Shoppe  
Sportsmart  
St. Julien Hotel & Spa  
Sweetbird  
Thyme on the Creek  
Twisted Pine  
University of Colorado  
Walters & Hogsett Fine Jewelers  
Wheatside Animal Hospital

#### FOUNDATIONS

The 1040 Foundation  
Ahlstrand Family Foundation  
Allan and Joicie Appell Trust  
Elinor Patterson Baker Trust  
The Barrett Foundation  
The Bates Trust and Foundation  
Bickel Family Foundation  
Greg Bifle Foundation  
Lauretta Boyd Charitable Trust

John G. Braun Charitable Annuity Trust  
Carson-Pfafflin Family Foundation  
The Collins Foundation Trust  
The Community Foundation  
Serving Boulder County  
Community Shares of Colorado  
The Compton Foundation, Inc.  
Davis-Tailor Foundation  
The Denver Foundation  
Willard L. Eccles Foundation  
En Cana Cares (USA) Foundation  
Family Charities Foundation  
Flagg Creek Foundation  
Humane Society of the United States  
Alice N. Jenkins Foundation  
The Jorgensen Foundation  
Tony La Russa's Animal  
Rescue Foundation  
Lookabaugh-Cadwell Family Foundation  
Maddie's Fund

Marcy Family Foundation  
McKesson Foundation, Inc.  
R. K. Mellon Family Foundation  
Menk Foundation  
Merriman Family Foundation  
The Moran Family Foundation  
Newton Family Fund  
Pacer Foundation  
PETCO Foundation  
PetSmart Charities  
PhilanthroPiece Foundation  
Purina Pets for People  
Frederick W. Richmond Foundation  
The Rosewood Foundation  
Wags & Menace Make a  
Difference Program  
Waterman Foundation, Inc.



## 2007 INDIVIDUAL CONTRIBUTIONS

### INDIVIDUALS BEQUESTS & ESTATES

The Estate of Marie Adams  
The Estate of Rhonda Carlson  
The Estate of Martha J. Stratton

### \$25,000 +

Lee and Virginia Evans

### \$10,000 +

Andy and Renee Enroth  
Jay and Judy Hearst  
Cindy Lee  
Jim and Marilyn Reynolds  
Don and Sabrina Shires  
Phil and Renee Shires  
Darrell and Sandra Wells  
Linda Wise  
Jim and Nancy Ziegler  
Budd Zuckerman and  
Laura Koby-Zuckerman

### \$5,000 +

Sandy and Sally Bracken  
William and Heidi Grimditch  
Cindy Hagg  
David Halvorson  
Jeffrey Salzman  
James Strouse  
Dave and Marcia Wyatt

### \$2,500 +

Daniel and Helen Ankarlo  
Harry and Donese Brittingham  
Susie Coit  
Jim and Julie Daehn  
Elizabeth L. Grote  
David and Suzanne Hoover  
Dr. Robert J. Kammer, Jr.  
Mike and Cindy Nelson  
Steve Olshansky  
Bob and Lyn Perdue  
Gregg and Kelly Rogers  
Rita Stanford  
Jeff and Shelley Stiffler

Bill and Jan Treadwell  
Ken and Alecia Wood  
Patty Young

### \$1,000+

Liz Armstrong and Michelle Alford  
Brian and Theresa Boone  
Sarah Bracken  
David and Laura Braddock  
Juliana Bratun  
Frank and Shelly Bruno  
John and Susan Cabell  
Dr. and Mrs. David Carbone  
Laurie Carlton-Marez  
Mark and Margaret Carson  
James Collins and Joanne Ernst  
Dan and Kelly Craig  
Gerald Dancy  
Karen A. Davis  
Steven Day  
Gina Dunlop  
Regina Ebert  
Dave Evans, Sr.  
Sarah Farrell  
Barrett and Elyse Foster  
Nancy Gimeno  
John and Vicky Graham  
Carol Hampf  
Sally Hannaway  
Edwin Harris  
Roger Haston and Susanne Muller  
Bill and Colleen Hayes  
Tony Heatherton and Theresa Sherlock  
Tim and Nancy Holden  
William and Ingrid Hutson  
Peggy Iden  
Thomas Isaacson and Anne Watson  
Daniel Johnson  
Ted Jones  
Julia Jordan  
Bruce and Lisa Joss  
Jason and Connie Kapp  
Neil and Debbie Korte  
Iris Lambka  
Jeanne Lawrence

Katie MacReynolds  
Robert Mahler  
David Martinez  
Angie Mashaw  
Judy McCarson  
Jeffrey Smith and Jan McHugh-Smith  
Jim and Andrea Merryman

Linda Moore  
Jeff and Karin Morgan  
Charlie and Linda Oliver  
Lisa Pedersen  
Kurt and Dee Plache  
Wendy Pobirk  
Stephen Potts  
Presley and Stacey Reed  
Jennifer Roos  
Robert and Vicky Roy  
Fred Rubin  
Nancy L. Sanders  
Stephen Schein  
Dean and Vicki Schooler  
Richard and Vivian Kay Seale  
Muriel Sharp  
Larry Shipton  
George Shopp and Jill Rogers  
John and Susan Stearns  
John and Coralyn Stransky  
Stephen and Shari Tebo  
John Thacker  
Sue Thompson  
Reed and Jennifer Thompson  
Margaret Van Cleave  
Ralph and Anne Voigt  
Susanne Vorlage  
Ann Weaver  
Greg and Deanna Westfall  
Stuart Williams and Charlene Contre  
John S. Wilson  
Brent and Susan Wilson  
Steven and Terry Woods  
Daniel Zantzinger







#### \$500 +

Edward and Gaynel Andrusko  
Pam Antell  
Bob and Ellen Arnold  
Dean and Carissa Augustad  
Herman and Janet Axelrod  
Maude Babington  
Derek and Nancy Bailey  
Ira Barron  
Geoff Baukol  
Natalie Bentzen  
Betty J. Bingham  
Jeneye Bolton  
Catherine Breeding  
Fletcher and Janie Brown  
Grace Buckley  
Steven and Sherry Ceplus  
Ken Chez and Cheryl Bauer  
Troy Curtiss  
Jody Davis  
Melissa Edwards  
Karin De Jamaer  
Jack and Shirley Deeter  
Steve and Nadia Degrazio  
Connie Dewart  
Tim and Charmaine Estep  
Neal Feagans and Joanne O'Shell  
Brad Feld and Amy Batchelor  
Jeanine Figur  
Craig and Jan Fisher  
John Fleming  
Dean and Jan Fritz  
Billie Fulton  
Betsy Gill  
Rodney Paul Gallagher  
Robert Goodbody  
Mark and Annette Graff  
Diana Graham  
Rickie Hall  
Chuck and Carol Haraway

Gene Hardy  
Trent and Stephanie Hein  
Cici Heller  
Brent Herron  
Lolita Higbie  
Chris and Mindy Hill  
Amy L. Hirter  
Greg and Michelle Hoppes  
Kerry Howard  
Vikki Hughes  
Nancy Johansen  
Curtis and Holly Johns  
William and Linda Johnson  
Rebecca Johnson  
Mark and Dianne Johnson  
Judy Johnson  
Margie Joseph  
Elizabeth Klemme  
Elizabeth Knight  
Debbie Koch  
Rita Kosch  
Sally Kuisle  
Dr. Carolyn Kupka  
Shirley Lalezari  
Christopher Lamson and Carla Wirtz  
Robert and Carol Lathrop  
Donald Lichtenstein  
Nicole Locker  
Dana Lulich  
Ashley Lynn  
Vivian Markham  
Anthony Mayorkas  
Denise McCleary  
Mo McKenna  
Dave Merry and Missy Simpson  
Vicki Mewmaw  
Francis Mojo  
Brian Moore and Susan Doughty  
Charles and Martha Myers

Patricia Myrick  
Gregory Norris and Tommi Johnsen  
Delma Oberbeck and Fred Fickett  
Paul Page  
Tim Penn  
Michaela Phillips  
Rich and Julie Pollack  
Judith Prager  
Paul and Elizabeth Reynolds  
Matthew Richman  
Scott and Kathy Rudge  
Robin Rudick  
Tim and Lynn Ryan  
Michael Sampliner  
Carlos Sandoval  
Marc Schuricht  
Mark and Sloan Schwindt  
Mary Scrimgeour  
Ardith Schulster and Eugene Tidball  
Doug and Tonya Selbee  
Dave Sheldon  
David and Monica Signer  
Haley Sinn-Penfold  
Grant Slade and Brenda Vathauer Slade  
Brad Smith  
Amy Stahl  
John and Kathy Steinbaugh  
Robert and Judy Stone  
Kathy Tegtmeyer  
Lawrence and Ann Thomas  
Paul and Sandy Turley  
David Volejnicek and Eileen Hurley  
Catharine Vorhaus  
Ken Wagers  
Greg Weiss  
Wally and Betty Wieregg  
Martin and Robin Wright  
Melvin and Frances Wyrick  
Trudy Younger and Jill Widden



# HUMANE SOCIETY OF BOULDER VALLEY

## HOW TO FIND US:

### **ADOPTION CENTER AND SUNNYSIDE RETAIL STORE**

2323 55th Street, Boulder 303-442-4030

Open Monday - Friday, 11 a.m. - 7 p.m.

Saturday - Sunday, 11 a.m. - 5 p.m.

### **TRAINING AND BEHAVIOR CENTER**

2323 55th Street, Boulder 303-442-4030 ext. 368

For online registration go to  
[boulderhumane.org/training](http://boulderhumane.org/training)

### **VETERINARY CLINIC**

2323 55th Street, Boulder 303-442-4030 ext. 680

Open Monday - Friday, 7:00 a.m. - 6 p.m.,

Saturday, 7 a.m. - 5 pm Closed Sunday.

By appointment only

### **ANIMAL CARE AND CONTROL**

2323 55th Street, Boulder 303-441-3333

### **THRIFT AND GIFT SHOP**

5320 Arapahoe Road, Boulder 303-415-0685

Open Monday - Saturday, 10 a.m. - 5:30 p.m.

Donations accepted:

Monday - Saturday, 10 a.m. - 4 p.m. | Sunday, 11 - 5

