

REACHING

New Lifesaving Breakthroughs

2011 ANNUAL REPORT



**HUMANE
SOCIETY**
OF BOULDER VALLEY

It's Amazing to
HOW MANY



See

LIVES WE CAN REACH

Dear Friends,

I'm proud to share with you that more than 9,000 animals' lives were touched last year through your support of Humane Society of Boulder Valley programs and services. We were able to extend our compassion throughout our community and beyond through lifesaving programs that mend the body and spirits of the animals we touch. Impactful programs such as our comprehensive shelter medicine program and our behavior modification and training efforts, along with our robust transfer and adoption programs ensure the ripple effect of our impact grows and widens to meet the emerging needs of the people and animals in our community.



Steadily during the last decade we have seen a decline in the number of animals coming into our facility from our own community. Our ability to prevent relinquishment and reunite lost and stray animals is a key to this success. Giving every guardian the skills, resources and understanding they need to maintain a healthy relationship with their pet is a central goal of what we do every day. All of these things combined enable us to open our doors even wider to animals from other communities who are healthy and happy and just need to find a new home. And we can do even more for the animals of our own community, treating every animal as a unique individual case.

This year was another opportunity to innovate and evolve how and what we do in our facility and beyond. Because of you and your trust and support we have even higher aspirations – and the responsibility – to do even more. Saving more lives is just the beginning. I hope you will share in the joy of the many happy endings you make possible. Throughout these pages you will see examples of these stories and how your contributions were the foundation of all of our efforts. Thank you for your continued support and belief in our work and our vision.

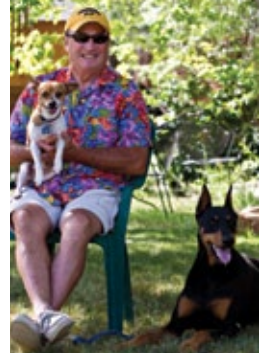
Sincerely,

A handwritten signature in cursive script that reads "Lisa Pedersen".

Lisa Pedersen
CEO

Dear Supporters,

I am very proud to be a representative of the Humane Society of Boulder Valley and on behalf of the Board of Directors, wish to acknowledge our admiration and appreciation of the staff, volunteers, benefactors, business partners and community for their continued support of the organization's mission. We remain a national leader in the field of companion animal adoptions, veterinary care and training as a result of your continued support. In the pages ahead you'll read about several indicators from this past year that demonstrate a growing commitment and continuing success.



A few of the breakthroughs from 2011 that will lead to even greater successes in the coming years include:

- The opening of a new, highly successful adoption center at Westminster PetSmart which enables us to save more lives
- Continuing growth of our nationally recognized behavior modification program which gives more animals the special care they need and deserve
- Achieving our highest-ever live release rate thanks to our community's support with more adoptions and more pets being reunited with their guardians.

The Humane Society of Boulder Valley relies on the invaluable involvement of our greater community which allows much of this success. The Board remains committed to meeting the needs of companion animals and understanding the community's priorities. Long-term goals are periodically established and based on the feedback we receive from our stakeholders and the established measures for success. The future is very exciting, and efforts are underway to increase our ability to do even better. This includes evaluating daily operations, assessing building usage and needs, and maintaining a highly professional staff.

Your support and influence is critical to improvement, and we welcome your feedback on how this can occur. Please feel free to contact our Executive Director or other HSBV leaders as needed. Thank you once again for all you do on the behalf of companion animals in our community!

Sincerely,

A handwritten signature in cursive script that reads "Joseph A. Sleeper".

Joseph A. Sleeper
Chair, Board of Directors

REACHING

New Lifesaving Breakthroughs!

Accepting challenges, being innovative, creating and seizing opportunities, and finding new ways to collaborate and do more together – it's who we are and the way we do things at the Humane Society of Boulder Valley.

We are leaders in the animal welfare industry, and we are able to achieve and succeed because of your support and commitment to our work and to the thousands of animals we serve each year.

Our programs and services are designed to strengthen and nourish the human-animal bond. It's a proven fact that both people and animals benefit physiologically and emotionally from mutual interaction.

SOME OF OUR LIFESAVING BREAKTHROUGHS AND ACHIEVEMENTS IN THE PAST YEAR

Providing shelter, loving care and services to 9,334 animals in 2011.

Adopting and reuniting pets with guardians, resulting in a 93.09% live release rate in 2011 – our highest ever and a 44% increase from 20 years ago.

Achieving one of the highest adoption rates and most successful adoption programs in the country.

Opening a new, highly successful adoption center at the Westminster PetSmart® thanks to our partnership with PetSmart Charities®.

Transferring in thousands of dogs and cats each year from overcrowded shelters where they face uncertain futures.

Giving more shelter dogs and cats the special attention and treatment they need and deserve to overcome behavior problems through our nationally recognized behavior modification program.



THAT MAKE US UNIQUE INCLUDE:

Reuniting more pets with their families, with reclaim rates for dogs and cats substantially higher than national averages.

Caring for animals in need of medical attention and treatment by providing expertise and a wide scope of veterinary services any pet may need.

Delivering disaster assistance and emergency relief for animals in extreme cases of need including the Arkansas and South Dakota floods, Arizona hoarding case, Colorado sled dog operations seizure and other severe animal abuse cases.

Teaching pets and their guardians the skills they need to maintain and enhance their relationships.

While we're proud of our achievements, there's still so much more we want to do to help animals in need. We are fortunate to have unfaltering community support, generous business partners, highly skilled staff and incredible volunteers, which together allow us to provide a bountiful array of services unparalleled by many shelters across the country.

Protecting and Enhancing the Lives of Companion Animals by Promoting Healthy Relationships between **PETS AND PEOPLE**

Creating New Beginnings With Adoptions

Achieving our goal to promote healthy relationships between pets and people often starts with the adoption of an animal from our shelter. We continue to be proud to have one of the highest adoption rates of animal shelters throughout the country. In 2010 during the ASPCA Save More Lives \$100K Challenge, our adoption numbers hit record-setting levels. We pushed ourselves, were innovative and tried many new ideas and thought we'd done the best we ever could. **We're very proud to report that in 2011 we broke those records, finding new homes for more animals than ever before!**

Through the adoption of lost, abandoned and relinquished companion animals, 6,977 new relationships were created, 447 more lives were saved than in 2010 – an increase of 7 percent! This total includes 4,398 dogs, 2,308 cats and 271 small mammals and birds. We are dedicated to making strong matches between our animals and potential adopters through the adoption process and understanding the needs of both our pet and human clients.

In partnership with our friends at PetSmart Charities® we proudly opened a new Enhanced Adoption Center on Saturday, July 23, 2011 in PetSmart's® Westminster retail location at 10460 Town Center Drive at Highway 36 and Church Ranch Blvd. This new adoption center is allowing us to better serve Broomfield County residents, gives us additional kennel space to facilitate

more adoptions, allows us to transfer in more dogs and cats, and ultimately save more lives. We opened this new center with much anticipation a year ago, and we're proud to report that it continues to be a tremendous success. This enhanced adoption center is part of a nationwide initiative from PetSmart Charities with the goal of saving more homeless pets. We are one of 11 such centers around the country opened by PetSmart Charities since May 2010, and our center is the most successful in the country.

This year we also continued to implement some of the new best practices we learned work well for us and other shelters during the ASPCA Challenge. Our popular "Free Cat Friday" fee-waived adoption promotions continue to result in high adoptions of our adult cats, with many being long-term residents, and hundreds of new, loving relationships.

We focused on new ways to decrease every animal's length of stay at our shelter, trying new approaches to find them homes more quickly, enhance and enrich their experiences while with us and create more awareness for our long-term cats and dogs. Our average length of stay for dogs in our shelter is getting better and is now just eight days, while cats are averaging 14 days of stay in our shelter.



Reuniting Families

Being lost or stray can mean an uncertain future for so many animals. Imagine the worry and fear of losing your own pet. We are proud of our communities' commitment to their pets demonstrated by our high **shelter reclaim results that are higher than most shelters around the country**. Happily, we can report that last year 939 lost and stray animals were reunited with their families. Dogs in the Boulder Valley have a 70 percent reclaim rate, while 19 percent of our cats are reunited. This is vastly better than the national average of 15-20 percent for dogs and only 2 percent for cats (according to the ASPCA), but we are committed to increasing this in our communities. Seeing families come to the shelter and be reunited with their beloved pets is one of our greatest joys.

We're continuing to increase community education about safeguarding pets, especially cats, starting with the basics: a simple collar and tag are the single most effective ways to identify a pet. Every pet leaves our shelter with a microchip, and we consistently remind guardians to protect their pets by keeping the microchip contact information current. Each year the news media report several incredible pet reunion stories of long-lost pets whose microchip information led them back home. Ensuring every pet wears identification and has a microchip is essential, and educating people about resources to more quickly reunite them with their pets is a priority for us.

Saving Lives Through Animal Transfers

Our strong adoption program enables us to reach out to other shelters throughout our region and in surrounding states to help them manage the volume of animals coming in their front doors and save more lives. By partnering with PetSmart Charities® Rescue Waggin® Program and local shelters through the Metro Denver Shelter Alliance, we transferred in 3,927 animals in 2011. We are grateful for our partnerships with these transfer programs, and we love to hear adopters tell stories of their dogs who came all the way from Oklahoma, New Mexico, Utah, Kansas or southern Colorado to find their new homes.

In October 2011 we were proud to welcome Dawn to our shelter, the 50,000th dog to be transferred through the Rescue Waggin' Program since the program started in 2004. Dawn was a mature Golden Retriever who came to us on a transfer from Santa Fe Animal Shelter & Humane Society and found her new home with a Boulder couple in just two days. Since joining the program in 2007 as the Great Plains region destination shelter, the Humane Society of Boulder Valley has re-homed more than 8,000 dogs with loving families.

We are one of only a few shelters in the country that transfers in cats from other shelters. More than half of the animals in our adoption center come from other shelters. Through this program the source shelters get much-needed relief and assistance, and our community benefits from a wonderful variety of animals to choose for adoption.

When you adopt from our shelter, you're really saving two lives – the animal you bring home and another animal that we now have the space and resources to support.



Giving Homeless Animals a Healthy, New Start With Shelter Medicine

Our innovative shelter medicine program is a key part of saving more lives each year. Medical rehabilitation mends the bodies and spirits of more than 40% of the animals we shelter. This program is vital to those animals who do not have guardians to care for them.

In 2011 we provided 4,052 spay and neuter surgeries for shelter animals, a 4% increase from the previous year. Our veterinarians also provide a range of services to shelter animals rarely available to animals in other shelters including repairing broken limbs, treating skin issues and providing radiology, dentistry, ophthalmology and laboratory work.

These services and surgeries not only improve the lives and behavior of shelter animals but also play a critical role in managing pet overpopulation and in some cases, their ability to survive and get the second chances they need and deserve to find new homes.

Setting Shelter Animals Up For Success With Behavior Modification

In concert with our medical care, we are dedicated to the mental health of our animals as well. From kennel enrichment to protocols aimed at modifying an animal's behavior, these critical and innovative programs ensure we can safely and successfully place dogs and cats into new homes. Positive reinforcement is the foundation for all of our behavior programs. Techniques and protocols developed at our facility are now being used by shelters to save more lives all across the country.

In 2011, 282 dogs and 170 cats – more than ever before – were rehabilitated through our shelter's behavior modification program, and we accepted 48 animals from other shelters for behavior issues that may have ended in euthanasia without our help. Our behavior modification focuses on helping animals who are challenged by body handling, dog-dog aggression, fear, food care/object guarding, separation anxiety and litterbox issues.

Caring For Our Companions

Providing a lifetime of wellness for pets is essential to their ability to have long, healthy lives with their guardians. Our dedicated team of veterinary professionals provides quality and compassionate medical services to shelter animals and pets with guardians. From spay and neuter surgeries, preventative care, orthopedics and dermatology to radiology, dentistry, ophthalmology, internal medicine and laboratory work, we offer the expertise and scope of services any pet may need. The clinic's revenue from serving public clients subsidizes all of the vital shelter medicine provided to our homeless animals.

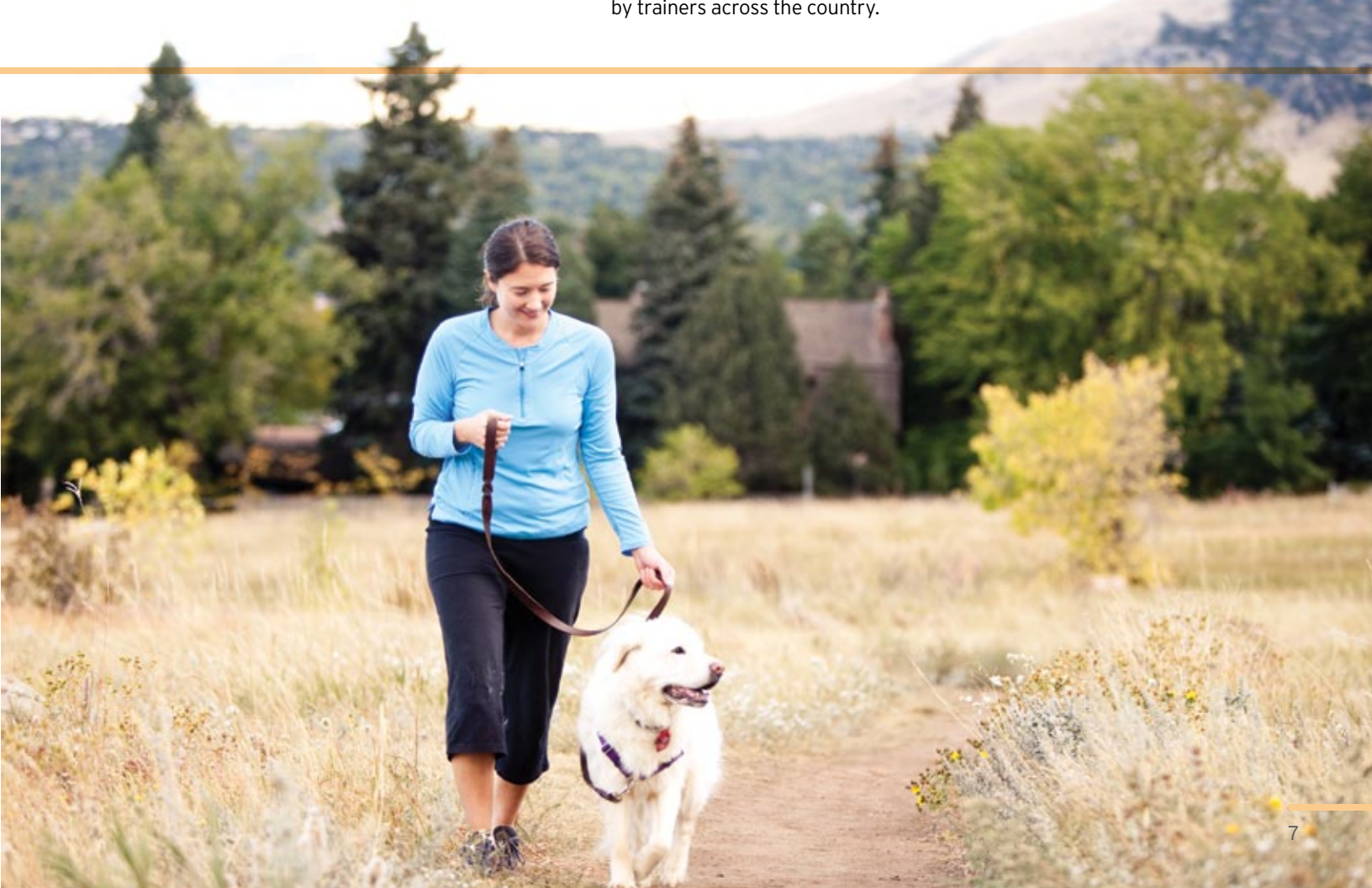
In 2011 our veterinary clinic also continued participation in two community programs to assist low-income guardians who need financial assistance for medical care for their pets. Spay Day 2011 is a national program of the Humane Society of the United States for which we offered our Valentine's Day "Love Your Kitty? Fix Your Kitty!" event providing low-cost spay/neuter surgeries and vaccinations for 67 cats of public clients. We also participated in 9PetCheck, a partnership with 9News and the Colorado Veterinary Medicine Association, to provide 36 free wellness checks in one day for pets of qualifying guardians. We also had more than 60 dogs and cats enrolled in our highly successful "Weigh To Go" weight management program which encourages guardians to help their obese and pudgy pets shed a few pounds to improve their overall health and well-being.

Training & Behavior Classes and Consultations For Guardians & Their Pets

Enrolling in training classes is a wonderful way to build a healthy relationship between a pet and a person. Both guardians and pets relish in the joy of learning new skills and ways to reduce stressful behaviors and have more fun together. With 1,072 clients taking a class or receiving a private consultation in 2011 to better understand how their animals learn and how to set those relationships up for success, we're thrilled with the number of healthy, respectful relationships being formed each day in our community.

While the majority of our training center pet clients are dogs, we also offered nearly 20 private consultations for cat guardians to help with their pet's behavior concerns. Reward-based training is the most effective way for animals to learn and retain their skills long term, and our full scope of classes offered seven days a week gives pet guardians the opportunities and skills to employ this type of training. The best outcome of this approach is a great positive relationship with pets!

In 2011 we also launched a creative, first-of-its-kind community awareness and education campaign called the No-Choke Challenge. The campaign was created due to our desire to enhance the relationships between people and their pets by providing a safe and effective tool to encourage enjoyable walks together. We encouraged people to simply bring in their current choke, prong or shock collar and exchange it for a complimentary SENSE-ation® no-pull harness from Softouch Concepts, Inc. They also received a coupon for a discount on our training classes to further enhance the relationship you share with your dog. This highly successful campaign led to nearly 800 exchanges, along with numerous positive media stories which prompted interest in creating similar campaigns by trainers across the country.



BEING A SAFETY NET

For the Community

We know the solution for any animal in need is a person who cares. Saying “yes” and doing all we can to ensure animals can stay with their families is an important part of our mission and culture. To this end, we offer several programs to assist people in need so giving up their pets is not the decision they are forced to make. These services have grown from the needs and financial support of our community so we can continue to be the safety net for both animals and the people who love them.

Our Food SHARE program provides free pet food to qualified clients. In 2011, more than 90 individuals took advantage of this simple resource. Ensuring their pets have nutritious food enables people to keep their pets healthy and often allows them to also take better care of themselves with their limited resources.

Our Veterinary SHARE program gives discounts for qualified individuals for pet services in our public clinic. Through this program we can provide expert care for their pets, keeping them healthy and happy and in their homes without having their guardians experience financial hardship to care for their pets.

Safe Haven is a partnership with Safehouse Progressive Alliance for Non-Violence and the Emergency Family Assistance Association. For individuals in crisis or transition, we provide housing arrangements for family pets until a safe and stable residence can be found. This program gives victims of abuse and violence a safe alternative for their pets so they can leave a dangerous or unstable environment knowing their pets won't become victims as well.



VOLUNTEERS

The Heart of Our Organization

We are so fortunate to have a strong volunteer team who relentlessly give their time and talents and answer our call to do whatever it takes to help our animals in need. When the mercury dips below zero or above 100 degrees, our volunteers are here to give our dogs their walks and much-appreciated energy releases and enrichment. They also provide cat and ferret enrichment and play, giving our furry friends a better and less stressful experience while they wait to find their new homes.

In 2011, nearly 700 volunteers contributed 52,925 hours to caring for our animals, helping with adoptions and

behavior training, doing laundry, assisting with animal care and maintaining surgical supplies in our veterinary clinic, raising funds and assisting in our retail store, thrift shop and new Westminster PetSmart adoption center. Their donations of time and talent are equivalent to almost 26 full-time employees! Our volunteers make a difference in the lives of homeless animals every day. They assist our staff to do whatever is needed. Their dedication and hard work make it possible for us to meet the needs of every animal who comes through our doors. We simply could not do what we do without them – thank you, volunteers!

Signature Events

RAISING VITAL FUNDS

Puttin' on the Leash Gala-Under The Sea

Our 19th Annual Puttin' On The Leash Gala was the largest event in our history. This event is held the last weekend of April each year, and the 2011 event with an Under The Sea theme had a very tropical flair complete with a full "underwater" stage set and volunteer greeters costumed as mermaids, sailors, pirates, fish and other sea-life creatures. Guests browsed more than 650 silent auction items and enjoyed cuisine from 20 local restaurants that set up elegant food booths and sampled some of their most popular menu items. And in the end, more than \$340,000 was raised to support the animals served by the Humane Society.

Event Platinum Level Title sponsors included Colorado Capital Bank, Control Service Center, Club Z - Buddy & Laura Zuckerman, PurinaONE, Nuf Said Advertising, Superior Liquor, ViaTek, Vermilion and Marilyn & Jim Reynolds. Special thanks to CU Athletics and the Coors Events Center.

Cause for Paws Doggie Dash

Nearly 600 people of all ages, with nearly 300 of their dogs, came together in Boulder on September 10 to raise more than \$65,000 for homeless and abandoned animals during our 22nd Annual Cause for Paws Doggie Dash 4K Run/3K Walk presented by the Wags and Menace Make A Difference Foundation. We held a costume contest, provided a huge pancake breakfast and had more than 20 sponsors set up booths in our Pet Expo. Dogs and their guardians had a great time running and walking together! This event is held the second Saturday of September each year and is our second-largest fundraising event each year.

Top sponsors included Wags & Menace Make A Difference Foundation, Applied Trust, Nuf Said Advertising, KBCO, Roche Colorado, Daily Camera, PurinaONE and Control Service Center.

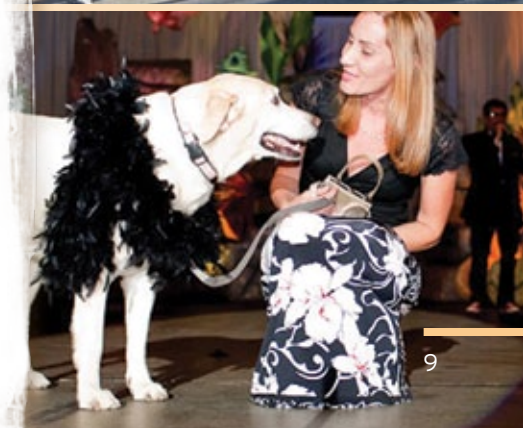
Camp Muddy Paws

Our popular Camp Muddy Paws summer camp offers a truly unique experience by giving young people a chance to learn about becoming champions of animals in need and teaching them about responsible pet guardianship, veterinary care, philanthropy and community volunteerism.

Our summer camps were completely revamped in 2011 and once again sold out in less than a week! In all, 1,185 children participated in Camp Muddy Paws and a variety of other humane education programs such as scout troop and school group tours.

Thrift and Gift Shop

Thanks to your generous donations of and shopping for gently used and new household items, books, clothing and furniture, our Thrift & Gift Shop raised nearly \$480,000 in 2011 to support the animals in our care. We enhanced our eBay sales program for higher value items and realized an increase in online sales. In addition to generating critical funds, our Thrift Shop assists with our cat adoption program by offering some of our longer-term resident cats a spotlight at the shop in one of the four adoption kennels.



ENHANCING

Awareness, Education and Reputation

In 2011 we completely redesigned and updated our website boulderhumane.org, thanks to generous support and the skills of our partners and friends at Applied Trust of Boulder. With more than 1.2 million visits to our website in 2011, we know it is our most important resource for our community and beyond. Our website is most actively used for people searching for photos, videos and descriptions of animals available for adoption. It's also a great place to learn about upcoming events, training and behavior classes, volunteer opportunities, veterinary services, pet care tips for guardians, ways to donate and support our work and so much more.

We also actively pursued opportunities to educate and inform people about our services, events and adoption animals by sharing stories with the news media, resulting in hundreds of media placements in 2011 with print, television, radio and online news outlets.

Our online presence has been significantly enhanced with the growth in our use of new channels and the popularity of our social media sites including Facebook, Twitter and YouTube.

With our website's new design, positive news stories and creating new ways to engage and draw our social media fans to our website, we saw a 53% increase in our website traffic in 2011 along with incredible results for fundraising, community awareness, event participation and adoptions.



2011

Awards & Community Recognition

Boulder Weekly Best of Boulder

2011 Best Non-Profit Organization, Best Veterinary Clinic, Best Pet Store, Runner-Up Best Fundraising Event for Puttin' On The Leash, and Runner-Up Best Used Treasures for Thrift & Gift Shop

Daily Camera's Boulder County Gold

2011 Runner-Up Best Non-Profit Organization

Colorado Daily CU & Boulder's Best Reader's Choice Awards

2011 Runner-Up Best Veterinary Clinic

Congratulations to our 2011 Annual Awards Winners

BUSINESSES AND ORGANIZATIONS:

- CU Athletics - Friendship
- Victoria Johns & QRC of Boulder - Unsung Hero
- Michael Lappin, DVM, Ph.D.. & CSU Veterinary Teaching Hospital - Unsung Heroes
- PetSmart Charities, Inc. - Advancement

VOLUNTEERS:

- Renee Enroth of Westminster - Distinguished Service
- Karen Foxwell of Boulder - Unsung Hero
- Andy Merryman of Boulder - Community Engagement
- Marilyn Reynolds of Boulder - Humanitarian of the Year

EMPLOYEES OF THE YEAR:

- Kayleigh Paladino of Boulder - Animal Enrichment
- Jennifer Schwartz of Boulder - Exceptional Client Service
- Don Shires of Westminster - HSBV Ambassador

Board of Directors

Bruce Joss **CHAIR**

Joe Sleeper **VICE CHAIR**

Michele Wells **SECRETARY**

Sally Bracken

Frank Bruno

Meg Collins

Linda Lannen

Ned McClain

Marilyn Reynolds

Renée Shires

Steven Woods

Budd Zuckerman

Executive Team

CHIEF EXECUTIVE OFFICER

Lisa Pedersen, CAWA

VICE PRESIDENT OF FINANCE & ADMINISTRATION

Steve Metzger

VICE PRESIDENT OF DEVELOPMENT & COMMUNITY RELATIONS

Don Shires

ANNUAL REPORT EDITOR

Kim Sporrer, APR
Director of Communications
news@boulderhumane.org



By the Numbers

SOURCES OF SUPPORT	2010	2011	2011 % of total	% Change
Services	\$3,077,044	\$2,706,851	54%	-12%
Contributions	\$2,349,111	\$2,199,738	44%	-6%
Investment Income	\$490,617	(\$118,677)	-2%	-124%
In-kind	\$97,855	\$211,156	4%	116%
TOTAL	\$6,014,627	4,999,068	100%	-17%

EXPENSES

Animal Welfare, Behavior and Sheltering Services	\$2,916,094	\$2,497,004	47%	-14%
Animal Health Care	\$1,484,056	\$1,489,155	28%	0%
Community Outreach	\$249,707	\$275,289	5%	10%
Support Services	\$263,936	\$276,567	5%	5%
Development & Fundraising	\$811,596	\$797,001	15%	-2%
TOTAL	\$5,725,389	\$5,335,016	100%	-7%

OUR LIVE RELEASE RATE

Since 2002 we have collected and reported our statistics according to a nationally recognized formula called the Asilomar Accords. Aimed at providing a consistent and transparent way of understanding the outcomes of the animals coming through our front doors, we measure our success through the number and percentage of lives saved. The live release rate represents the percentage of animals who leave our building alive through reunification if they are lost or stray or through adoption into a new home.

We are proud to report our live release rate for 2011 improved to 93.09%, a 2% increase from the previous year and our highest ever. While there is no accepted national average for live release rates, Maddie's Fund gathered data from 322 organizations around the country and found the 2010 national average of Community Live Release Rates for the nation was 58%.

Working with the Metro Denver Shelter Alliance, we track the statistics of more than 20 animal welfare agencies in our area. Through the Alliance we look for trends and emerging needs so collaboratively we can identify ways to save more animals lives. The chart on the following page outlines our 2011 statistics:

		2010			2011		
		Dog	Cat	Total	Dog	Cat	Total
A	BEGINNING SHELTER COUNT January 1	59	69	128	102	77	180
	INTAKE (Live Dogs & Cats Only)						
	From the Public						
	Healthy	1,565	1,128	2,693	1,941	1,057	2,998
	Treatable – Rehabilitatable	109	448	557	100	403	503
	Treatable – Manageable	266	315	581	290	326	616
	Unhealthy & Untreatable	401	421	822	348	353	701
B	Subtotal Intake from the Public	2,341	2,312	4,653	2,679	2,139	4,818
	Incoming Transfers from Organizations within Community/Coalition						
	Healthy	87	91	178	83	50	133
	Treatable – Rehabilitatable	3	79	82	15	14	29
	Treatable – Manageable	12	3	15	31	3	34
	Unhealthy & Untreatable	53	5	58	21	0	21
C	Subtotal Intake from Incoming Transfers from Orgs within Community/Coalition	155	178	333	150	67	217
	Incoming Transfers from Organizations outside Community/Coalition						
	Healthy	2,424	595	3,019	2,752	695	3,447
	Treatable – Rehabilitatable	258	78	336	49	41	90
	Treatable – Manageable	154	6	160	91	11	102
	Unhealthy & Untreatable	42	4	46	28	11	39
D	Subtotal Intake from Incoming Transfers from Orgs outside Community/Coalition	2,878	683	3,561	2,920	758	3,678
	From Owners/Guardians Requesting Euthanasia						
	Healthy	0	0	0	0	0	0
	Treatable – Rehabilitatable	0	0	0	0	0	0
	Treatable – Manageable	0	0	0	0	0	0
	Unhealthy & Untreatable	135	105	240	127	87	214
E	Subtotal Intake from Owners/Guardians Requesting Euthanasia	135	105	240	127	87	214
F	Total Intake [B + C + D + E]	5,509	3,278	8,787	5,876	3,051	8,927
G	Owner/Guardian Requested Euthanasia (Unhealthy & Untreatable Only)	135	105	240	127	87	214
H	ADJUSTED TOTAL INTAKE [F minus G]	5,374	3,173	8,547	5,749	2,964	8,713
	ADOPTIONS (only dogs and cats adopted by the public)						
	Healthy	3,087	1,421	4,508	3,807	1,588	5,395
	Treatable – Rehabilitatable	366	597	963	138	389	527
	Treatable – Manageable	344	206	550	299	240	539
	Unhealthy & Untreatable	168	70	238	154	90	244
I	TOTAL ADOPTIONS	3,965	2,294	6,259	4,398	2,307	6,705
	OUTGOING TRANSFERS to Organizations within Community/Coalition						
	Healthy	24	0	24	3	0	3
	Treatable – Rehabilitatable	3	0	3	5	0	5
	Treatable – Manageable	5	0	5	0	0	0
	Unhealthy & Untreatable	7	0	7	1	0	1
J	TOTAL OUTGOING TRANSFERS to Orgs within Community/Coalition	39	0	39	9	0	9
	OUTGOING TRANSFERS to Organizations outside Community/Coalition						
	Healthy	24	10	34	31	2	33
	Treatable – Rehabilitatable	10	9	19	2	1	3
	Treatable – Manageable	33	2	35	41	0	41
	Unhealthy & Untreatable	63	2	65	38	0	38
K	TOTAL OUTGOING TRANSFERS to Orgs outside Community/Coalition	130	23	153	112	3	115
L	RETURN TO OWNER/GUARDIAN	911	365	1,276	961	281	1,242
	DOGS & CATS EUTHANIZED						
M	Healthy (Includes Owner/Guardian Requested Euthanasia)	0	0	0	0	0	0
N	Treatable – Rehabilitatable (Includes Owner/Guardian Requested Euthanasia)	4	31	35	6	17	23
O	Treatable – Manageable (Includes Owner/Guardian Requested Euthanasia)	29	79	108	30	68	98
P	Unhealthy & Untreatable (Includes Owner/Guardian Requested Euthanasia)	374	446	820	349	341	690
Q	Total Euthanasia [M + N + O + P]	407	556	963	385	426	811
R	Owner/Guardian Requested Euthanasia (Unhealthy & Untreatable Only)	135	105	240	127	87	214
S	ADJUSTED TOTAL EUTHANASIA [Q minus R]	272	451	723	258	339	597
T	SUBTOTAL OUTCOMES [I + J + K + L + S] Excludes Owner/Guardian Requested Euthanasia (Unhealthy & Untreatable Only)	5,317	3,133	8,450	5,738	2,930	8,668
U	DIED OR LOST IN SHELTER/CARE	11	30	41	9	26	35
V	TOTAL OUTCOMES [T + U] Excludes Owner/Guardian Requested Euthanasia (Unhealthy & Untreatable Only)	5,328	3,163	8,491	5,747	2,956	8,703
W	ENDING SHELTER COUNT December 31	102	78	180	104	85	189
	LIVE RELEASE RATE	91.4%			93.1%		

Planning Your Legacy **WHERE THERE'S A WILL**

Our Bequest Society and Legacy Giving Program enhances the long-term stability of the Humane Society of Boulder Valley by providing an extra stream of income to meet the increasing demand to save the lives of companion animals. By joining our Legacy Giving program, you will be part of making history with us and creating a cornerstone for our future. The animals are counting on us to be there for them, now and always.

We invite you to invest in our future by joining our Bequest Society and Legacy Giving Program. You are eligible to join by simply submitting a Bequest Society card to the Humane Society of Boulder Valley notifying us that you are making a gift to the organization. For more information and to request our Legacy Giving brochure, please contact us at 303-442-4030 ext. 669.



THERE'S A WAY

Bequest Society

Shelley Avery
Lyn Bain and Shelly Martin
Catherine and John Bender
Natalie Bentzen
Shari and Paul Braly
Susan Brooks
Jon and Karen Burgess
Kat Burns
Susan and John Cabell
Alan Caplan
Connie Dewart
Kimberly J. Divin
Becky and Bill Eeds
Virginia Evans
Karen Foxwell
Roy and Lynn Fredericks
Beth Godden
Anne Gostoli
Mike Grainger
Maud Greer
Cindy Hagg
Edwin Harris
James and Kathleen Hauser
Douglass Hawes
Tony Heatherton and
Theresa Sherlock
John and Gerda Hedderich
Jill Hendrickson
Judith Hensel
Carol Hickey

Kathy Hixson
Donna D. Holle
Peggy A. Iden
Julie Ireland
Charlotte Irey and Harold Short
Elli Johnson
Deborah Johnson
Dr. Margaret A. Kaufmann
Jack Keeley
Melanie Killinger-Vowell
and Dan Vowell
Rita Kosch
Irma Laszlo
Elaine D. Lee
Belinda Levin
Rima Lurie
Maxine E. Mandell
Cynthia McDonald
Garda and John Meyer
L. Robert Morris
Carolyn J. Nagusky
Kady Offen-Rovtar
Randi Opsahl
Mary Ann Paliani
Shaun Pardini
Tim and Beth Patterson
Pamela Resendez
Marilyn and Jim Reynolds
Dr. Gregg T. Rogers
and Kelly Rogers
Fred Rubin
Lori Santangelo

Thomasina L. Scherer
Mary Scott
Larry Shipton
Renée and Phil Shires
Don and Sabrina Shires
Jeffrey Smith and
Jan McHugh-Smith
Harold J. Smith
Linda Spiegler
Ann Tagawa
Jill Tarleton
Nancy Thornton
Margaret Van Cleave
Meredith and Patrick
Von Tschanner
Gunter and Marcia Weinzierl
Darrell and Sandra Wells
Mary and John Williams
Linda Wise
Laine and Charles Wolf
Lindsay Wood and Chris Brown
Frances Wyrick
Budd Zuckerman and
Laura Koby Zuckerman
Clifford and Molly Zwart

Bequest Received

Helen Bergman
Shirley Johnston
Dewey Montez, Sr.
Ann Spruyt
Linda Woodruff

Thanks to Our Wonderful SUPPORTERS

FOUNDATIONS

The 1040 Foundation
 Alice N. Jenkins Foundation
 Andrew Graham Charitable Foundation
 Animal Assistance Foundation
 ASPCA
 The Bates Foundation and Trust
 Bernice Barbour Foundation
 Bieber Family Foundation
 Broomfield Community Foundation
 Build-a-Bear Workshop Bear Hugs Foundation
 Campbell Family Foundation
 Cars For Charity
 Carson-Pfafflin Family Foundation
 Collins Foundation Trust
 The Colorado Health Foundation
 Colorado's Helping Hands Foundation
 Communities Foundation of Texas
 Community First Foundation
 The Community Foundation Serving Boulder County
 Community Shares of Colorado
 Davis-Tailer Foundation
 Denver Foundation
 Denver Zoological Foundation
 El Pomar Foundation
 Elinor Patterson Baker Trust Fund
 Foothills United Way
 Foundation for Protection of Animals
 The Frederick W. Richmond Foundation
 GR's Foundation

Humane Society of the United States
 Lauretta Boyd Charitable Trust
 Mile High United Way
 National Philanthropic Trust
 The Peterson Family Fund
 PetSmart Charities
 Rosewood Foundation
 Russell Maguire Foundation
 Shannon Family Foundation
 Sonny Foundation
 Sorenson Family Foundation
 Tigertree Foundation
 Tony Stewart Foundation
 Wags & Menace Make a Difference Foundation

ORGANIZATIONS

\$10,000+

Applied Trust Engineering
 Genesis Select Corp.
 Nuf Said Advertising
 Superior Liquor Market
 PurinaONE

\$5,000-\$9,999

Beverage Distributors
 Colorado Capital Bank
 Control Service Center
 Daily Camera
 HW Home
 KBCO Radio
 Natural Habitat Adventures
 Todd Reed, Inc.

\$2,500-\$4,999

Broadway Animal Hospital and Pet Center
 Butler Rents
 Chocolove Premium Chocolates

Cottonwood Kennels
 Google Matching Gifts Program
 IBM Employee Services Center
 Ignite Boulder
 J. Albrecht Fine Jewelry
 Roche Colorado Corporation
 Ted's Montana Grill
 ViaTek

\$1,000-\$2,499

Alpine Hospital for Animals
 Amgen Foundation
 Applebee's Neighborhood Grill
 Arcadia Design Group
 Avery Brewing Company
 Baker Street Pub and Grill
 Ball Corporation
 Barbara Bronk Interior Design
 Bedell Antiques
 Ben & Jerry's
 Benefits & Incentives Group, Inc.
 Blue Moon Cake Design
 Boulder Creek Restaurant Group
 Boulder Sundown Saloon LLC
 Brock Publishing
 Covidien
 CU Athletics Department
 Dell Direct Giving Campaign
 Fidelity Charitable Gift Fund
 First National Bank of Colorado
 FlatIron Moving
 Foundry Group, LLC
 Front Range Catering
 Gallery Osborne
 Half Fast Subs
 Harpo's Sports Grill
 Hess Collection Winery
 Hunter Douglas Inc.
 John's Restaurant
 Liquor Mart

Micro Motion, Inc.
 Murphy's Bar and Grill
 Noodles & Company Boulder
 Nuveen Investments
 Only Natural Pet Store
 Pasta Jay's
 Peet's Coffee and Tea
 Pethealth Inc
 Pettyjohn's Liquor and Wine
 Ringmaker
 Shamane's Bake Shoppe
 Starbridge, Inc.
 Sun Deli & Liquor, LLC
 Sunflower Farmer's Market
 Tahona Tequila Bistro
 TDK Corporation of America
 Tebo Development Company
 Tellory Inc.
 Terroir Restaurant
 The Marquis at Town Centre
 The Ritz
 Vanguard Charitable Endowment Program
 Wells Fargo Wealth Management Group
 Whole Foods Market

\$500-\$999

Alps Boulder Canyon Inn
 Amgen
 Anna Zapp Designs
 Art On A Whim
 Aspenroot, LLC
 Babinetics
 Bill Cronin Goldsmith
 Bolder Calls
 Boulder Emergency Pet Clinic
 Boulder's Natural Animal
 Camp Bow Wow Boulder
 Carrot & Gibbs
 Colorado Athletic Club - Boulder

Co's BMW Center
 Customized Nutrition
 and Exercise
 Donelan Family Wines
 Encana Cares Foundation
 Essential Fitness
 First MainStreet Insurance
 First National Bank, Wealth
 Management Office
 Fisher Auto Inc
 Forest Oil Corporation
 Girl Scout Troop
 Good Karma Portraits
 Jax Outdoor
 Jordan Winery
 Lighting Plus, Inc.
 Lucile Drinkwater Allen Trust
 Microsoft Giving Campaign
 Mountain Sun Pub & Brewery
 Network For Good
 Ocean First Divers
 Omni Interlocken Resort
 Preucel
 Red Lodge Mountain Resort
 Ridge Liquors
 Sargent Bickham Lagudis
 Silver Fern Homes
 Unseamly in Boulder
 Verlo Mattress Factory
 Weekends

INDIVIDUALS

\$10,000+

Jeneye Abele
 Ross and Tammy Anderson
 Wally Dague
 Virginia Evans
 John Guthrie
 Ramin and Carla Lalezari
 Marilyn and Jim Reynolds
 Renee and Phil Shires
 James G. Strouse
 Dave and Marcia Wyatt
 Budd Zuckerman and
 Laura Koby Zuckerman

\$5,000-\$9,999

Carol Babb
 Brad Bickham

Cecilia and Garrett Boone
 Sally and Sandy Bracken
 Lisa Campbell
 Laurie Carlton-Marez
 Ken Chez and Cheryl Bauer
 Doug Dennis
 Cindy Hagg
 Greg Hanson
 Sarah Harding
 Ned and Sarah McClain
 Jim and Andy Merryman
 Darrell and Sandra Wells
 Patty Young

\$2,500-\$4,999

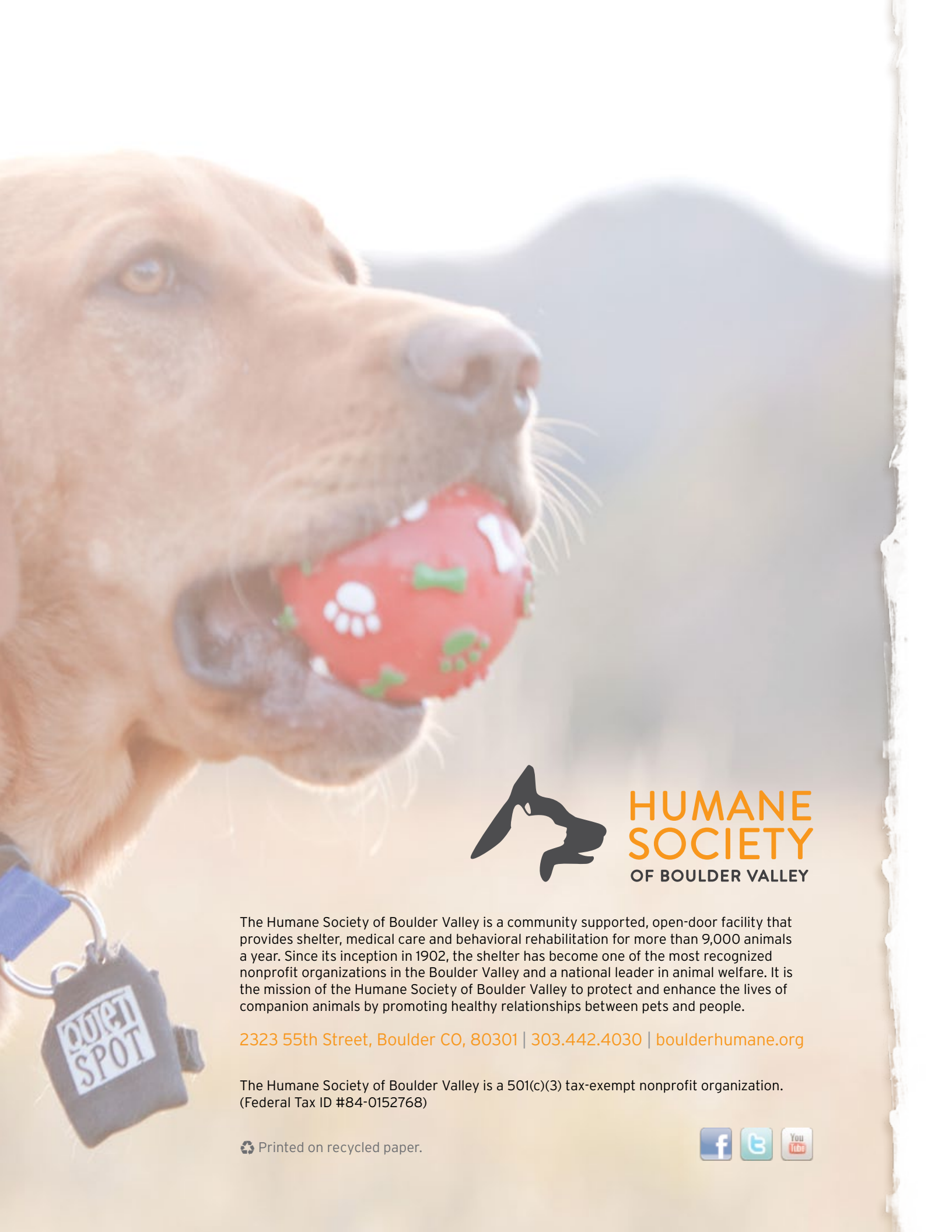
Judy and Ray Bagley
 Jenny C. Bryant
 Wendi Burkhardt
 Barbara Cheney
 James Collins and
 Joanne Ernst
 Gerald Dancy
 Helen Gemmill
 Lesli and Todd Groshong
 Hilary Heath
 Peter Kaye
 Cathleen Kendall
 Robert McGinty, Jr.
 Beth McNalley
 Mike and Cindy Nelson
 Robert Rhue
 Stephen Schein
 Sabrina and Don Shires
 Rita Stanford
 Bill Thompson
 Don and Kathy Weibel
 John S. Wilson
 Bill and Judith Wolpert
 Ken and Alecia Wood

\$1,000-\$2,499

Tonya Allen
 Elise Ames
 Robert and Sydney Anderson
 Glenn and Doris Angstadt
 Nicole Bianco
 Adelaide Biggs
 John Block
 Aimee Boone
 Matt Booth

Nancy Burgermeister
 Jan Burton
 Scott Busch
 Anne Butterfield
 Daria Carter
 Carol Clark
 Susie Coit
 William and Sandra Condon
 Jeremy Cowperthwaite
 Sharry Culligan
 Jim and Julie Daehn
 Karen A. Davis
 Brooke Davison
 Diane K. Dieter and Ted Jones
 Brett Dietz
 Gina Dunlop
 Esther Eicher
 Renee and Andy Enroth
 Maricor Ferry
 Karen Foxwell
 Nancy Gimeno
 Howard C. Goldblatt
 Becky Granger and
 Thomas Stamm
 Brent Green
 Carole and John Gustavson
 Kathleen Hancock
 Roger Haston and
 Susanne Muller
 Bill Hayes and
 Colleen Fitzgerald
 Curt and Jennifer Heckrodt
 John and Gerda Hedderich
 Nancy and Tim Holden
 Jennifer Hoover
 Greg and Michelle Hoppes
 Steven Horn
 Bill and Ingrid Hutson
 Thomas Isaacson and
 Anne Watson
 Bruce and Lisa Joss
 Jim and Jo Judd
 Robert Keatley
 Debbie Koch
 Rita Kosch
 Arian Lalezari
 Linda Lannen
 Donald R. Lichtenstein
 Joshua Lisle
 Christine Lopresti and
 Seth Johnson

Anthony Mayorkas
 Karen McVoy
 Kent and Susan Nuzum
 Delma Oberbeck and
 Fred Fickett
 Linda and Charlie Oliver
 Tim and Jessica Ornellas
 Lisa Pedersen
 Gail Pederson and
 Chris Kingdon
 Bob and Lyn Perdue
 Michaela Phillips
 Lindsay Pierce
 Judith L. Prager
 Felicia Renz
 Robin Richmond
 Lisa Ripley
 Parker and Jenny Roe
 Jennifer Roos and
 Michael Menard
 Sarah Routa
 Vicky Roy
 Carol Rudolph
 Stephanie Ruppert
 Nancy L. Sanders
 Kay and Rich Seale
 Tonya and Doug Selbee
 Larry Shipton
 Joseph A. Sleeper and
 Dorothy Reed-Sleeper
 Tim and Linda Stancliffe
 John and Coralyn Stransky
 Dianne Suess
 Melissa Sunderland
 Barbara Svik
 Cynthia Swain
 Marie Tallmadge
 Adam and Ali Ternan
 Michele and Bob Wells
 Deanna and Greg Westfall
 Heidi Wicks
 Stuart Williams and
 Charlene Coutre
 Carol Williams
 Nancy Word
 Katja Yeats
 Carli Zug and Steve Szymanski



**HUMANE
SOCIETY**
OF BOULDER VALLEY

The Humane Society of Boulder Valley is a community supported, open-door facility that provides shelter, medical care and behavioral rehabilitation for more than 9,000 animals a year. Since its inception in 1902, the shelter has become one of the most recognized nonprofit organizations in the Boulder Valley and a national leader in animal welfare. It is the mission of the Humane Society of Boulder Valley to protect and enhance the lives of companion animals by promoting healthy relationships between pets and people.

2323 55th Street, Boulder CO, 80301 | 303.442.4030 | boulderhumane.org

The Humane Society of Boulder Valley is a 501(c)(3) tax-exempt nonprofit organization.
(Federal Tax ID #84-0152768)

 Printed on recycled paper.

